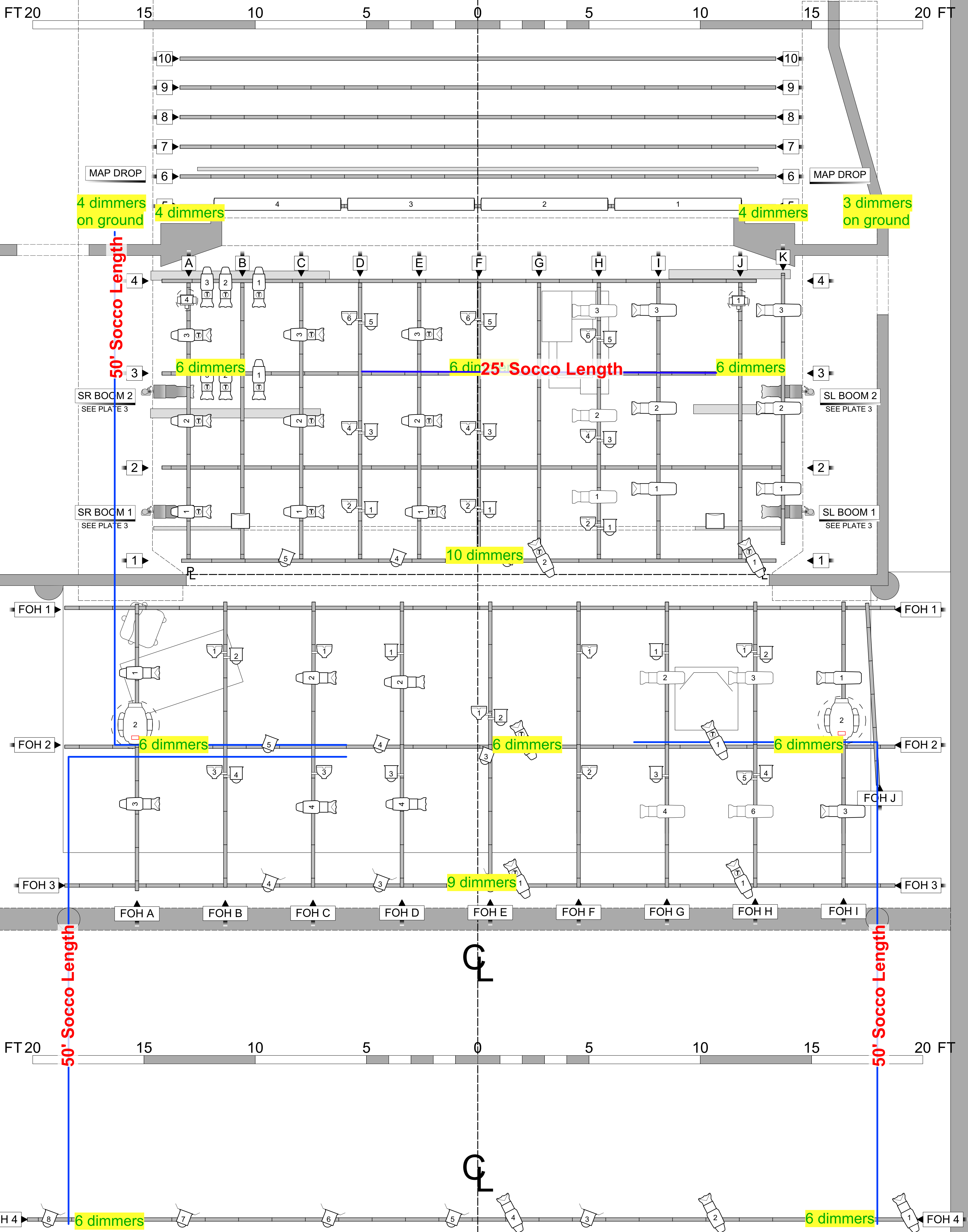


Q

Q

Q



WEBSTER UNIVERSITY  
CONSERVATORY OF THEATRE ARTS  
PRESENTS:  
**SHE KILLS MONSTERS**  
STAGE III  
ST. LOUIS, MO  
DIRECTED BY: GIO BAKUNAWA  
SCENERY BY: BREANNE FINNEBURGH  
LIGHTING BY: JESSICA STEVENS  
THIS DRAWING REPRESENTS VISUAL CONCEPTS AND  
CONSTRUCTION SUGGESTIONS ONLY.  
**JESSICA STEVENS**  
LIGHTING DESIGNER  
832.866.7556  
JESSTEVEN26@GMAIL.COM



**NOTES**  
- BLUE LINES REPRESENT SOCCO RUN

NO.	DATE	REV. NOTES
A	2/28/2018	PRELIM. PLOT
B	3/4/2018	PRELIM. PLOT 2
C	3/8/2018	FINAL PLOT

**LABEL LEGEND**

- COLOR
- TEMPLATE
- UNIT #
- CHANNEL
- INST. TYPE
- CHANNEL
- POSITION

**INSTRUMENT KEY**

- ETC S4 36° @575W
- ETC S4 50° @575W
- ETC S4 50° JR. @575W
- ETC S4 LED LUSTRA+ 50° @117W
- ETC S4 PAR WFL @575W
- 6" BARNDOR
- ALTMAN 6" FRESNEL @575W
- MARTIN MAC VIPER PERF. @1.225kw
- CHAUVET LEGEND 412 @144W
- AMERICAN DJ UV CANNON @120W
- COLORBLAZE 72 @420W

SCALE: 1/2" = 1'-0"  
**PRINT 24X36**  
DATE: 3/8/2018  
DRAWN: STEVENS  
PLATE  
**1B** OF 4  
**SOCCO RUN**