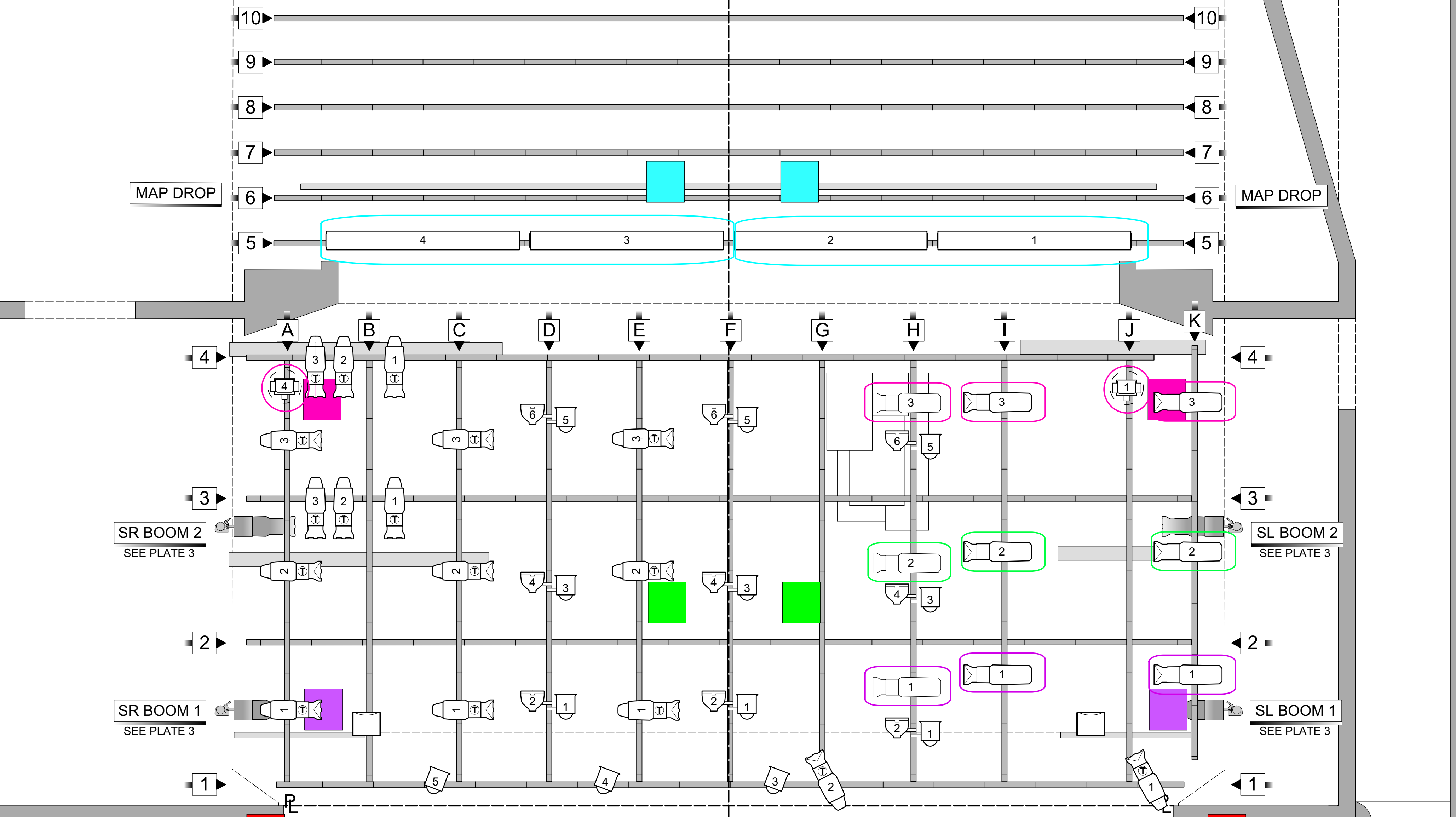


CL

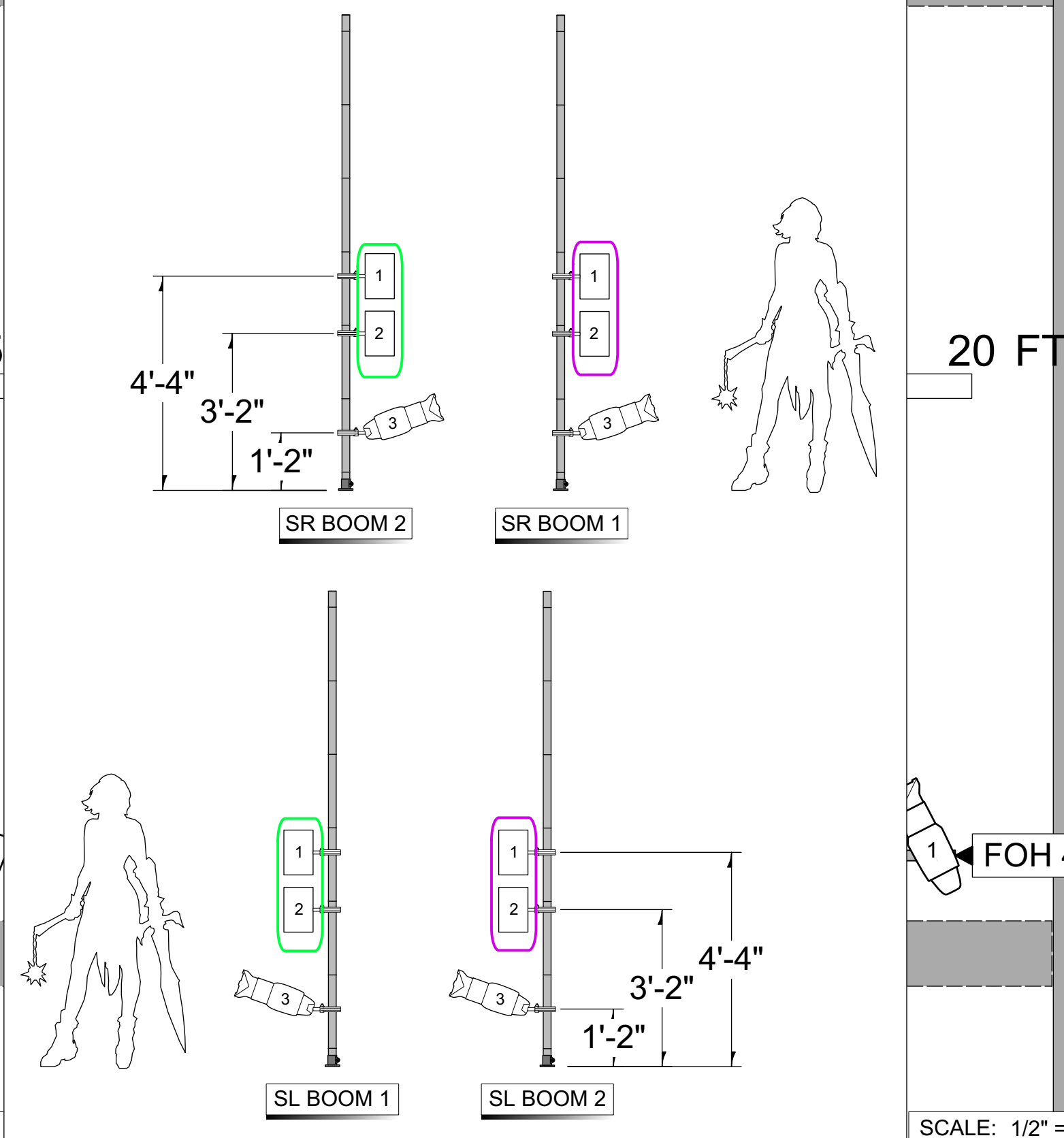
FT 20 15 10 5 0 5 10 15 20 FT



FT 20 15 10 5 0 5

CL

CL



WEBSTER UNIVERSITY
CONSERVATORY OF THEATRE ARTS
PRESENTS:
SHE KILLS MONSTERS
STAGE III
ST. LOUIS, MO
DIRECTED BY: GIO BAKUNAWA
SCENERY BY: BREANNE FINNEBURGH
LIGHTING BY: JESSICA STEVENS
THIS DRAWING REPRESENTS VISUAL CONCEPTS AND
CONSTRUCTION SUGGESTIONS ONLY.
JESSICA STEVENS
LIGHTING DESIGNER
632.866.7559
JESSTEVENS.26@GMAIL.COM

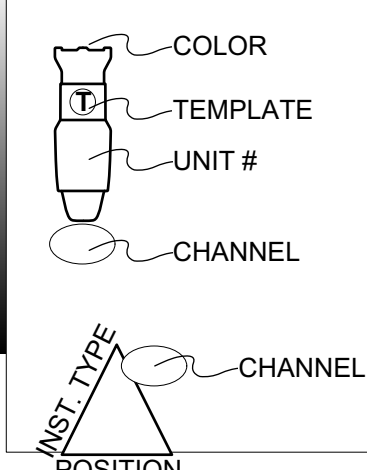


NOTES

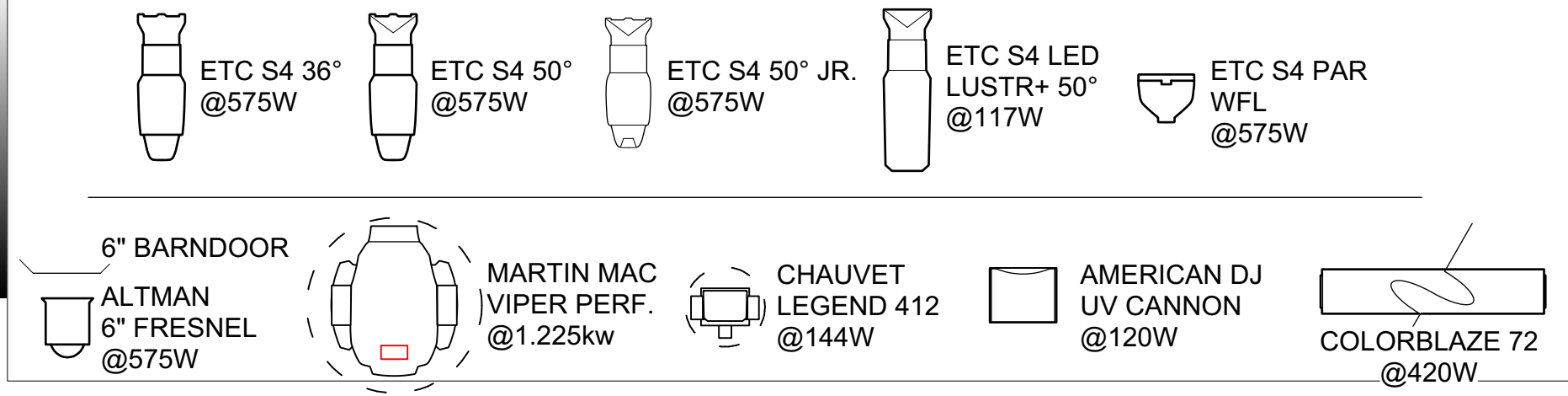
- FILLED IN BOXES REPRESENT HOT POWER
- EACH COLOR IS FOR EACH 2400W SECTION
- COLORED CIRCLES AND OVALS REPRESENT THE HOT POWER SECTION THE FIXTURE IS DESIGNATED TO

NO.	DATE	REV. NOTES
A	2/28/2018	PRELIM. PLOT
B	3/4/2018	PRELIM. PLOT 2
C	3/8/2018	FINAL PLOT

LABEL LEGEND



INSTRUMENT KEY



SCALE: 1/2" = 1'-0"
PRINT 24X36
DATE: 3/8/2018
DRAWN: STEVENS

PLATE
1D OF 4

HOT POWER PLOT