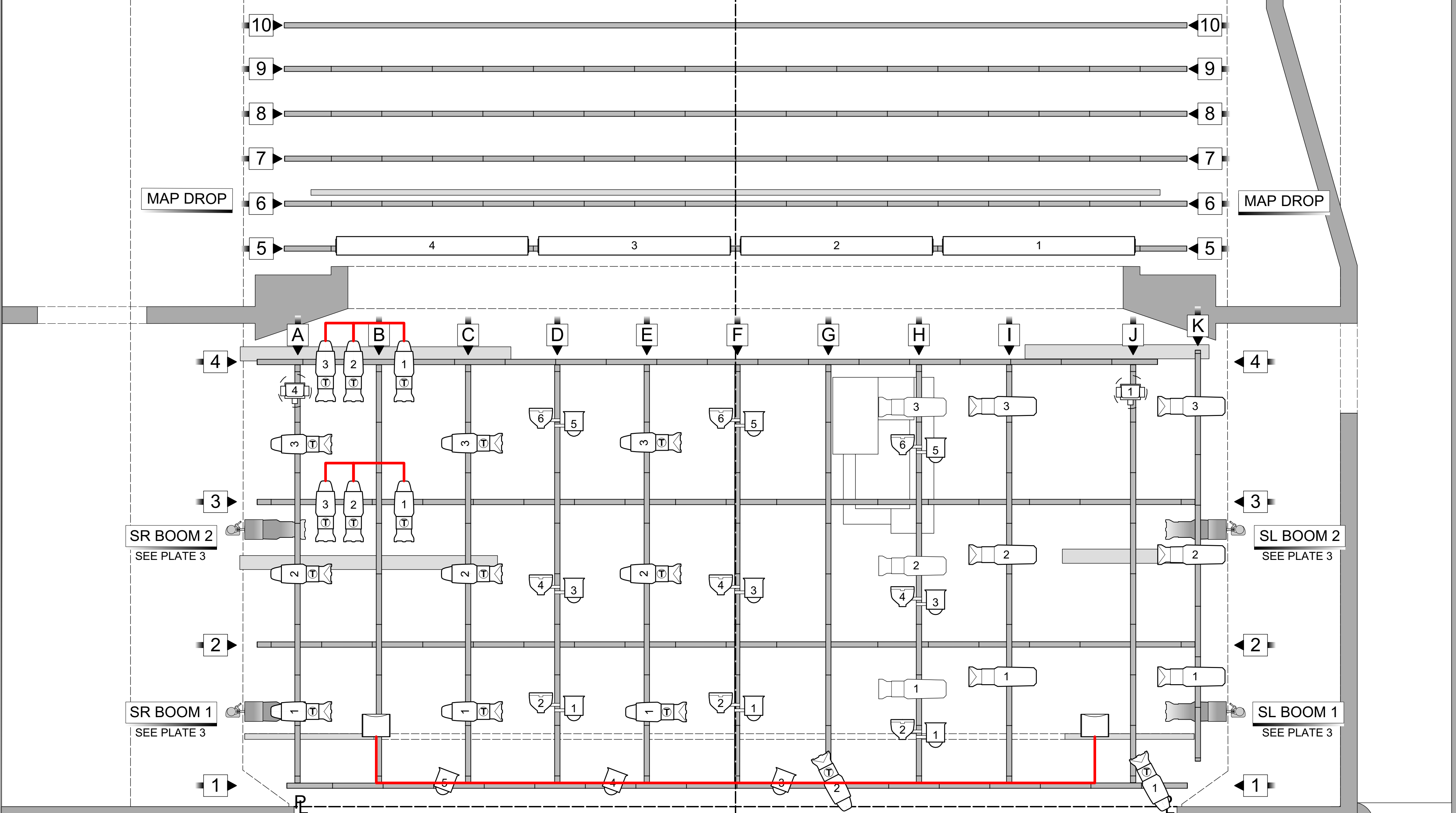


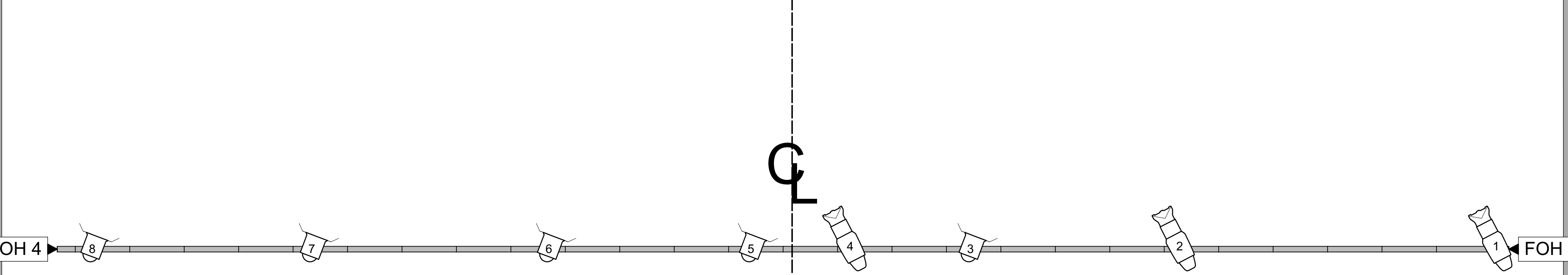
Q

FT 20 15 10 5 0 5 10 15 20 FT



Q

FT 20 15 10 5 0 5 10 15 20 FT



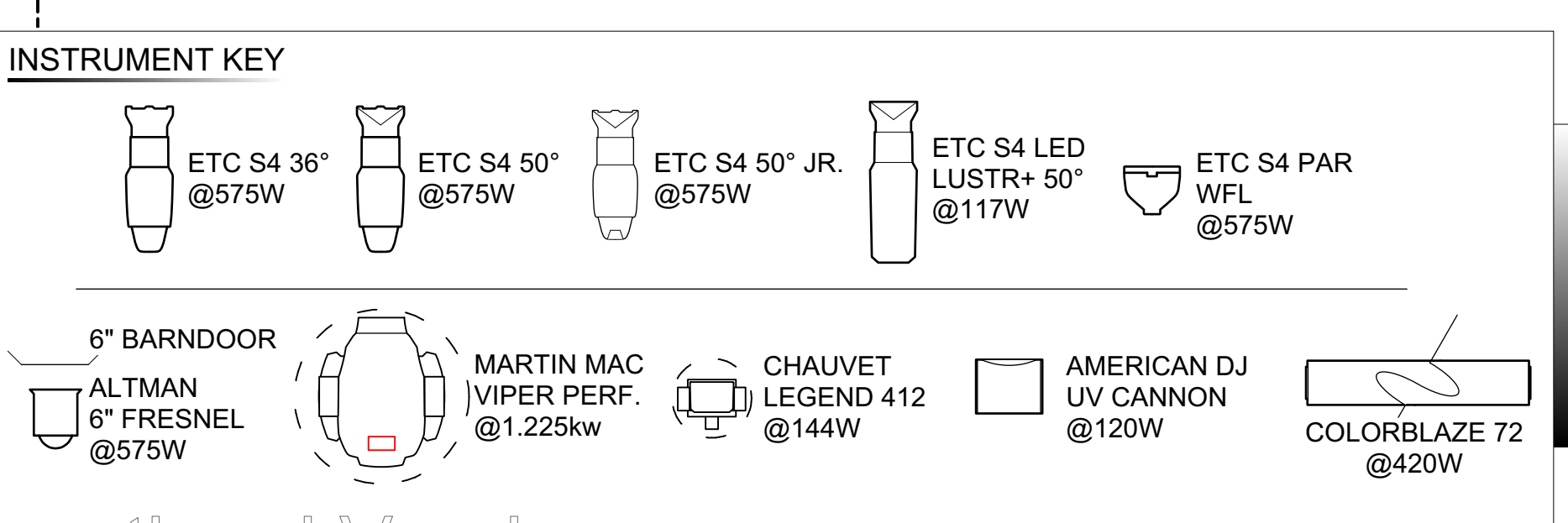
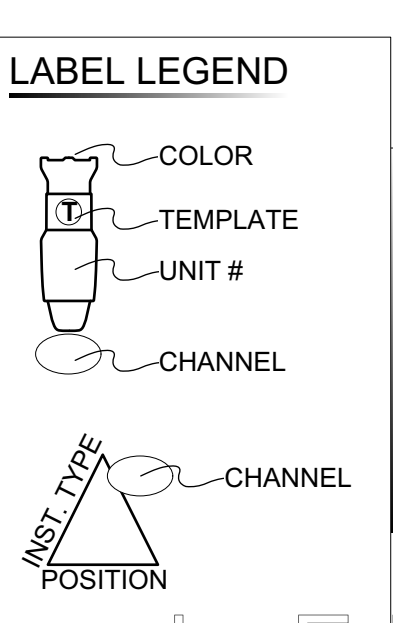
Q

WEBSTER UNIVERSITY
CONSERVATORY OF THEATRE ARTS
PRESENTS:
SHE KILLS MONSTERS
STAGE III
ST. LOUIS, MO
DIRECTED BY: GIO BAKUNAWA
SCENERY BY: BREANNE FINNEBURGH
LIGHTING BY: JESSICA STEVENS
THIS DRAWING REPRESENTS VISUAL CONCEPTS AND
CONSTRUCTION SUGGESTIONS ONLY.
JESSICA STEVENS
LIGHTING DESIGNER
832.866.7556
JESSTEVEN26@GMAIL.COM



NOTES
- RED LINES REPRESENT WHAT LIGHTS ARE TWO-FERED OR THREE-FERED TOGETHER

NO.	DATE	REV. NOTES
A	2/28/2018	PRELIM. PLOT
B	3/4/2018	PRELIM. PLOT 2
C	3/8/2018	FINAL PLOT



SCALE: 1/2" = 1'-0"
PRINT 24X36
DATE: 3/8/2018
DRAWN: STEVENS
PLATE
1C OF 4
Two-Fer PLOT